

Non Contact Thermometer Calibrator

OB-15/2 BBC (+ 30 °C ...+ 130 °C)

Special calibration baths - metrology performance:

- Blackbody cavity with emissivity higher than 0.99 in a calibration fluid bath
 - Ready-to-fit reference PRT or SPRT for monitoring fluid stability
 - Various standard and tailored blackbody cavity shapes available
 - Metrological uniformity and stability in mK range
 - Ready to run in benchtop design

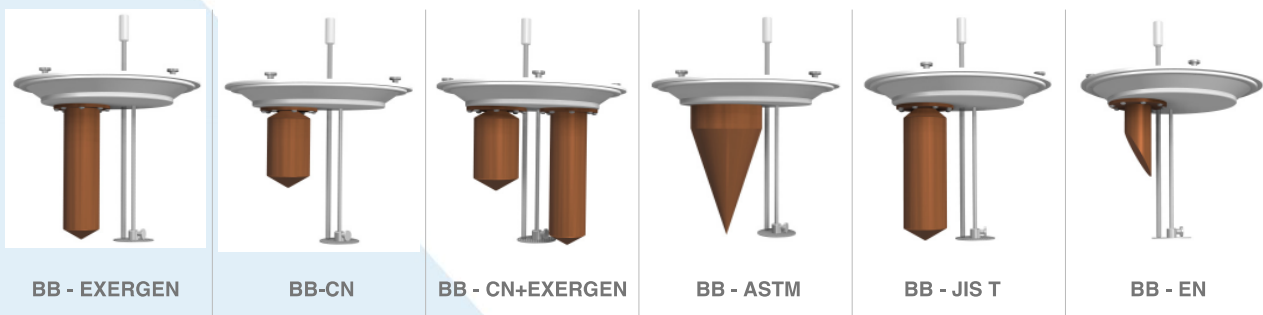


Temperature

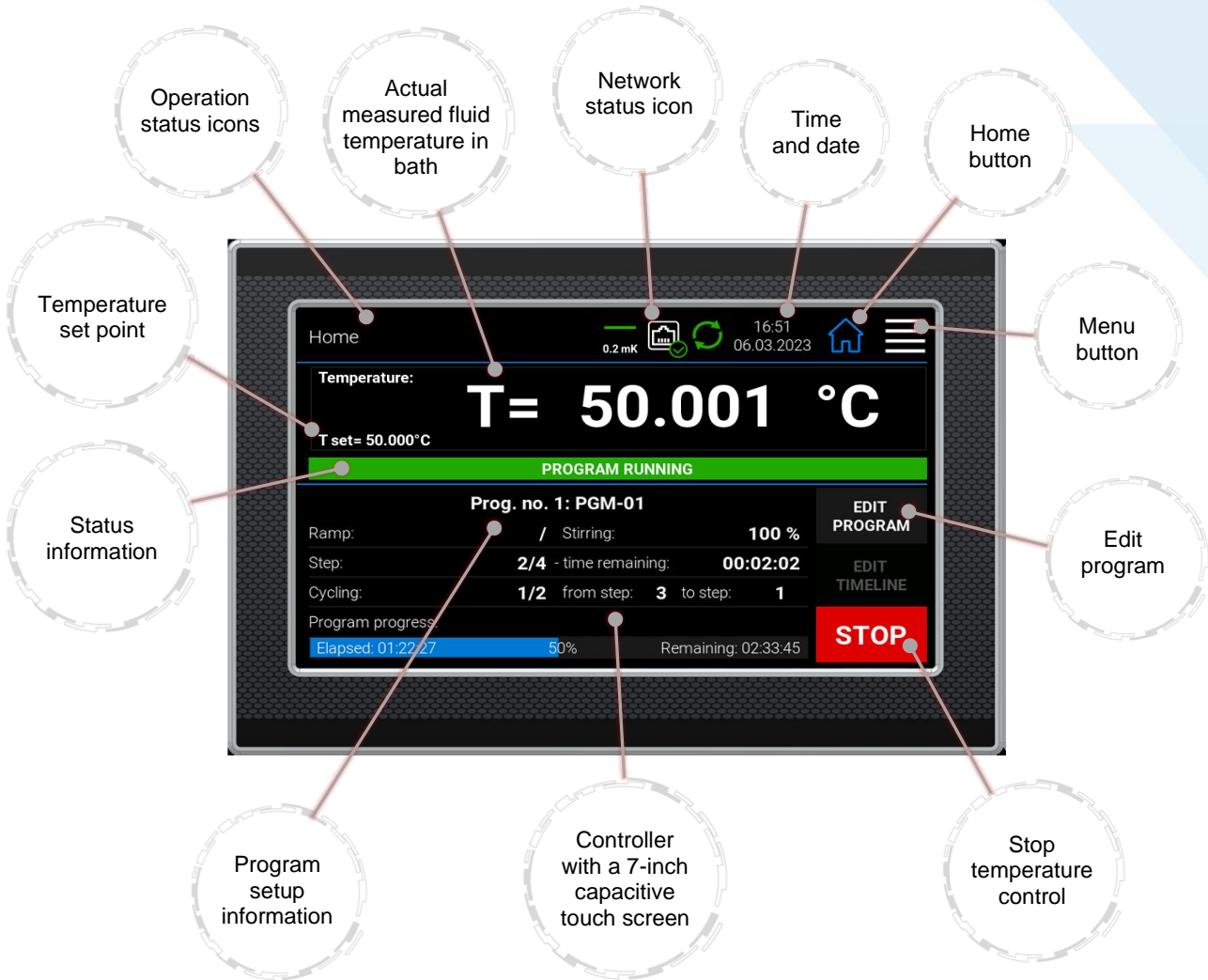
Device description:



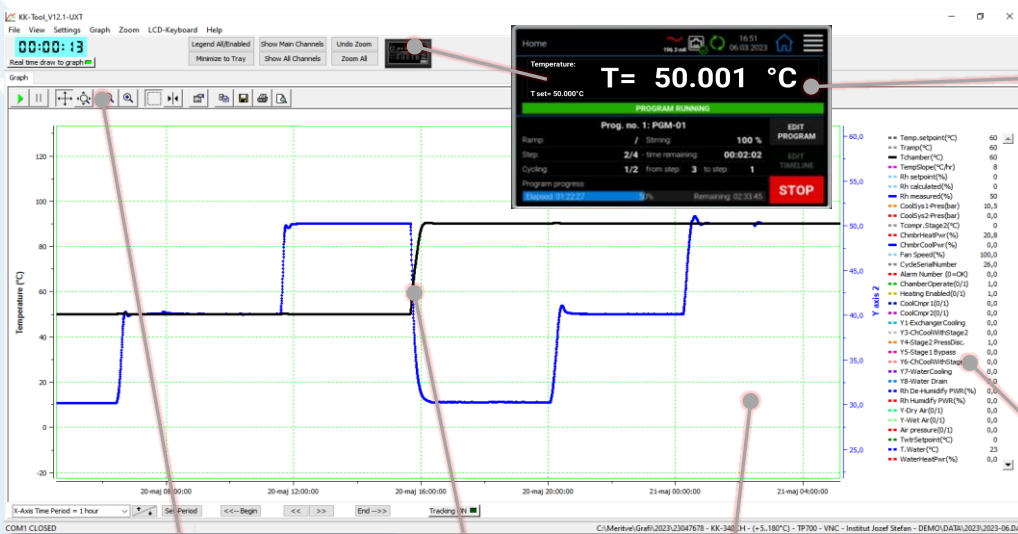
Black-body cavity options:




Touch display with advanced controller functions:



OB-Tool software for PC (free – included with every unit):



Technical data:

	OB-15/2
	
External dimensions (WxHxD) [mm]	534 x 545 x 474
Internal dimensions (diameter x immersion depth) [mm]	Ø 225 x 270
Volume [L]	~ 15
Fluid quantity for operation [L]	20
Temperature range [°C]	+ 30 °C ...+ 130 °C <i>* (0 °C ... 130 °C when connected to a circulating cooler)</i>
Temperature display resolution [°C]	0.001
Temperature set resolution [°C]	0.001
Temperature stability [°C]	± 0.002 @ 30 °C ± 0.002 @ 37 °C ± 0.002 @ 50 °C ± 0.003 @ 70 °C ± 0.003 @ 100 °C
Temperature uniformity [°C]	± 0.007
Heating rate	~ 1 hour (+ 40 °C ...+ 100 °C)
Cooling rate	N/A (natural cooling)
Temperature Control	PID
Noise level [dBA]	< 48
Cooling	Natural cooling <i>* (Ready for connection to a circulating cooler)</i>
Power supply	230 V 50/60 HZ (± 10 %)
Wattage [W]	1100
Interface	Ethernet, USB
Overflow catch pot	Included
Weight [kg]	~ 41

**All performance in controlled environment (Tambient = 22 °C ± 3 °C)!*

**Accessories might affect performance!*

**OB-15/2 BB performance data with fluid KDC 200.50*

**All the specifications are related to the bath and the fluid (not to the Black Body Cavity)*

Accessories:

- LIG thermometer holder



- Vertical fixture



- Adjustable multiple probe fixture



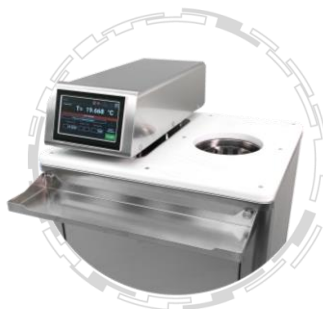
- External fluid level for LIG



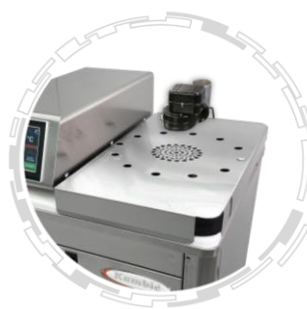
- Additional lid



- Removable shelf



- Fume hood



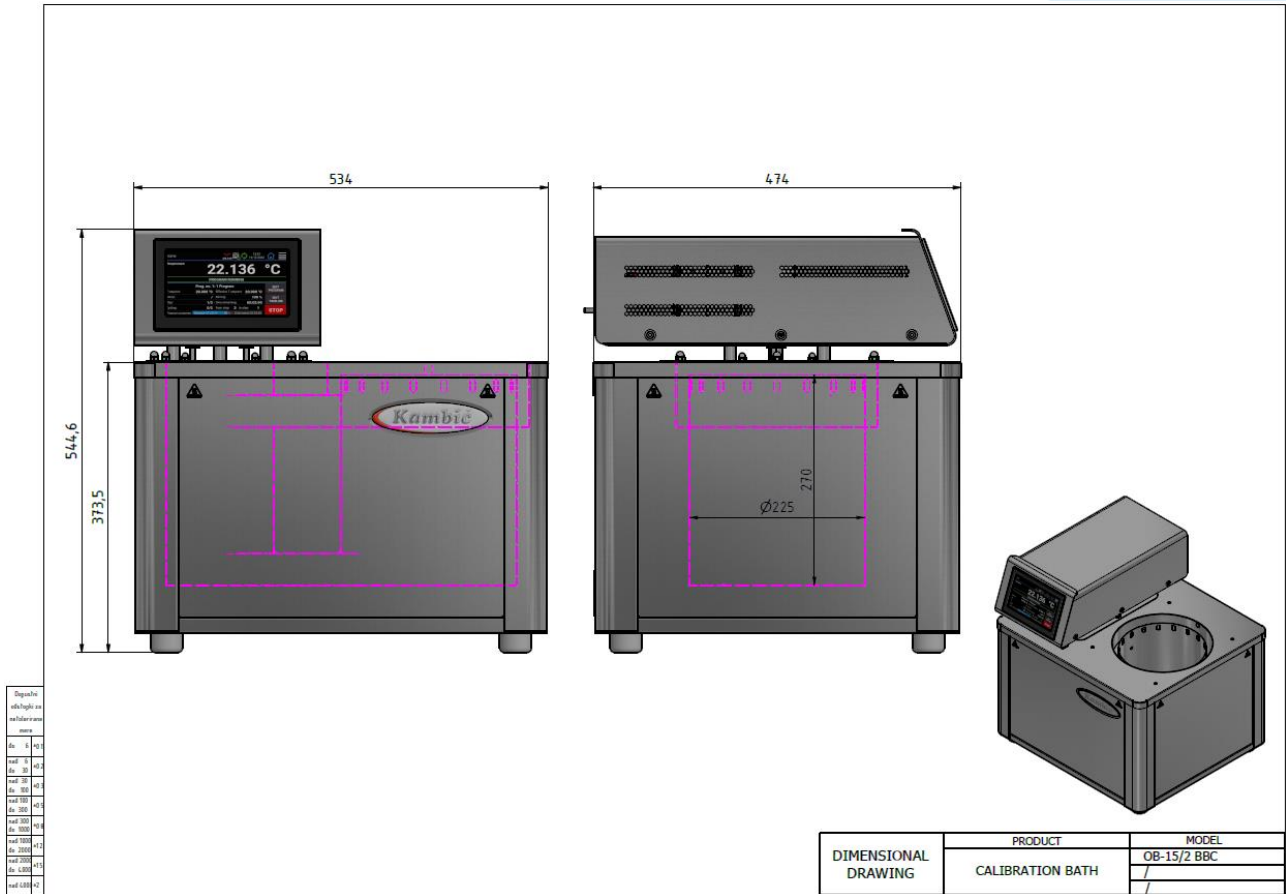
- Evaluation report



Ordering information and accessories:

Description	Part no.
Calibration bath OB-15/2 BBC	1925
Black Body cavity ASTM standard (vertical insertion flange)	2975
Black Body cavity JIS T standard (vertical insertion flange)	2976
Black Body cavity CEN EN standard (vertical insertion flange)	2977
Black Body cavity CN standard (vertical insertion flange)	2978
Black Body cavity EXERGEN standard (vertical insertion flange)	2979
Black Body cavity Combo (two bodies on one flange - vertical insertion)	/
Evaluation report – performed by Kambič	1719
Evaluation report (accredited ISO/IEC 17025:2017)	1777
External fluid level for LIG	1655
Vertical fixture	1657
Adjustable multiple probe fixture	1733
LIG (liquid in glass thermometer) fixture	1735
Local fume hood with fan	1656
Removable shelf	1658
Black body mounting flange cover (for operating without black body cavity)	2118
Extra lid for OB-15/2	2116
Extra side insulation lid for OB-15/2	2117
Silicone oil fluid KDC 200.50 (+ 30 °C ...+ 278 °C)	631
Silicone oil fluid KDC 200.05 (- 40 °C ...+ 130 °C)	645

**Black Body Cavity is not included with the base unit. It has to be ordered separately! *Accessories might affect performance!*



Black-body cavity:

1. Blackbody opening
2. Reference sensor opening
3. Height-adjustable shelf for reference sensor
4. Blackbody cavity



* Black Body Cavity is not included with the base unit. It has to be ordered separately!